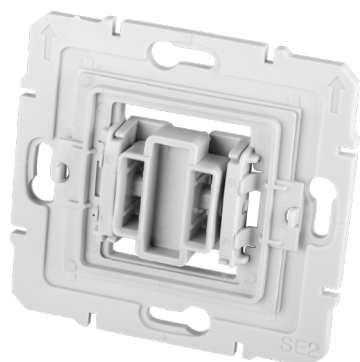


Schneider Electric Type 2 Adapter

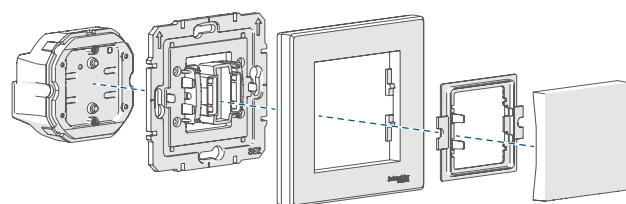
HmIP-ADA-SE2



homematic IP
Smart Living. Simply Exciting..



With the Homematic IP Schneider Electric Type 2 adapter, the Homematic IP Switch Module for brand switches - International can be perfectly integrated into the Asfora switch series from Schneider Electric at low cost and with little installation work.



Schaltmodul für
Markenschalter
Switch module for
brand switches
Module de
commutation
pour interrupteurs
de marques

Passender
Adapter
Corresponding
adapter
Adaptateur
approprié

Rahmen
Frame
Cadre

Zwischen-
rahmen
Intermediate
frame
cadre
intermédiaire

Wippe
Rocker
Bascule

Operation requires connection to one of the following solutions:

- Homematic IP access point with free smartphone app and free cloud service
- Third-party partner solutions

SIMPLE INTEGRATION

The Homematic IP Schneider Electric type 2 adapter allows you to integrate your Homematic IP system easily and conveniently into the "Asfora" switch system from Schneider Electric.

Offering an intelligent solution for your switch system, the adapter can be attached to a Homematic IP Switch Module for brand switches (HmIP-BSM-I) in just a few steps.

SAVE COSTS THE SMART WAY

Adapters for different switches enable switches from popular manufacturers to be replaced cost effectively with an intelligent Homematic IP installation. The design, colour and finish of already installed switches remain the same since existing frames and rockers can continue to be used.

COMPATIBILITY

A separate list on the adapter's compatibility with standard switch series can be found in the website download area at www.homematic-ip.com.

LOGISTICS DATA

| | |
|------------------------|------------------|
| Product reference | 156107A2 |
| EAN code | 4047976561070 |
| Short description | HmIP-ADA-SE2 |
| Packing unit | 144 |
| Packing dimensions | 120 x 90 x 33 mm |
| Weight incl. packaging | 75.5 g |

TECHNICAL SPECIFICATIONS

| | |
|----------------------|-------------------------------------|
| Installation | only in switch boxes (device boxes) |
| Degree of protection | IP20 |
| Ambient temperature | -5 to +40 °C |
| Dimensions | 70 x 70 x 13 mm |
| Weight | 18 g |

PACKAGE CONTENTS

| |
|--|
| Homematic IP adapter for Schneider Electric Type 2 |
| Operating manual |